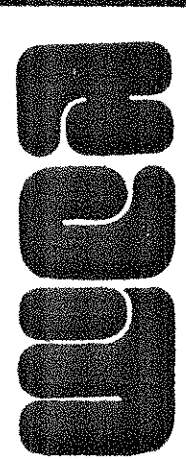




REVISIONS

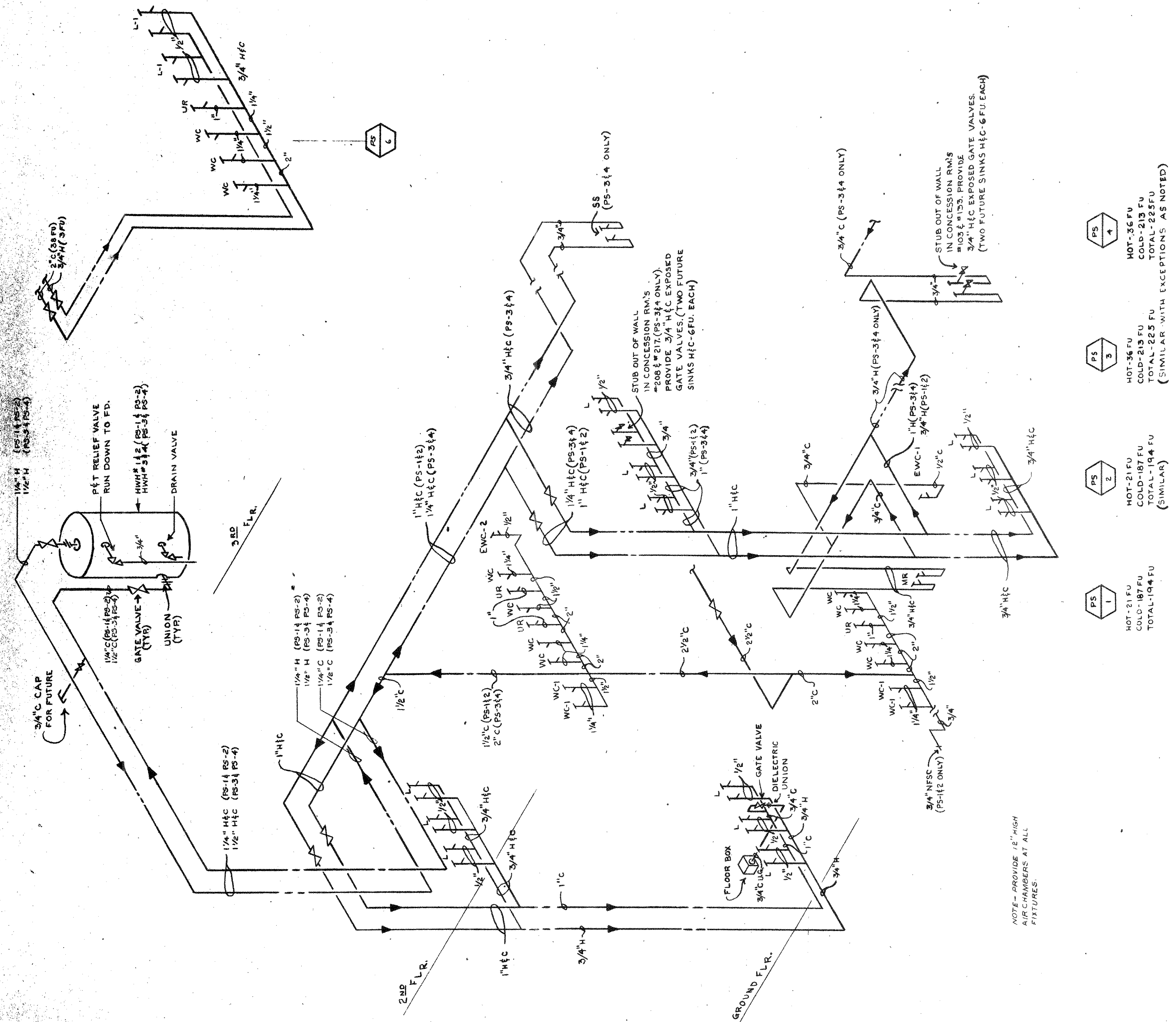
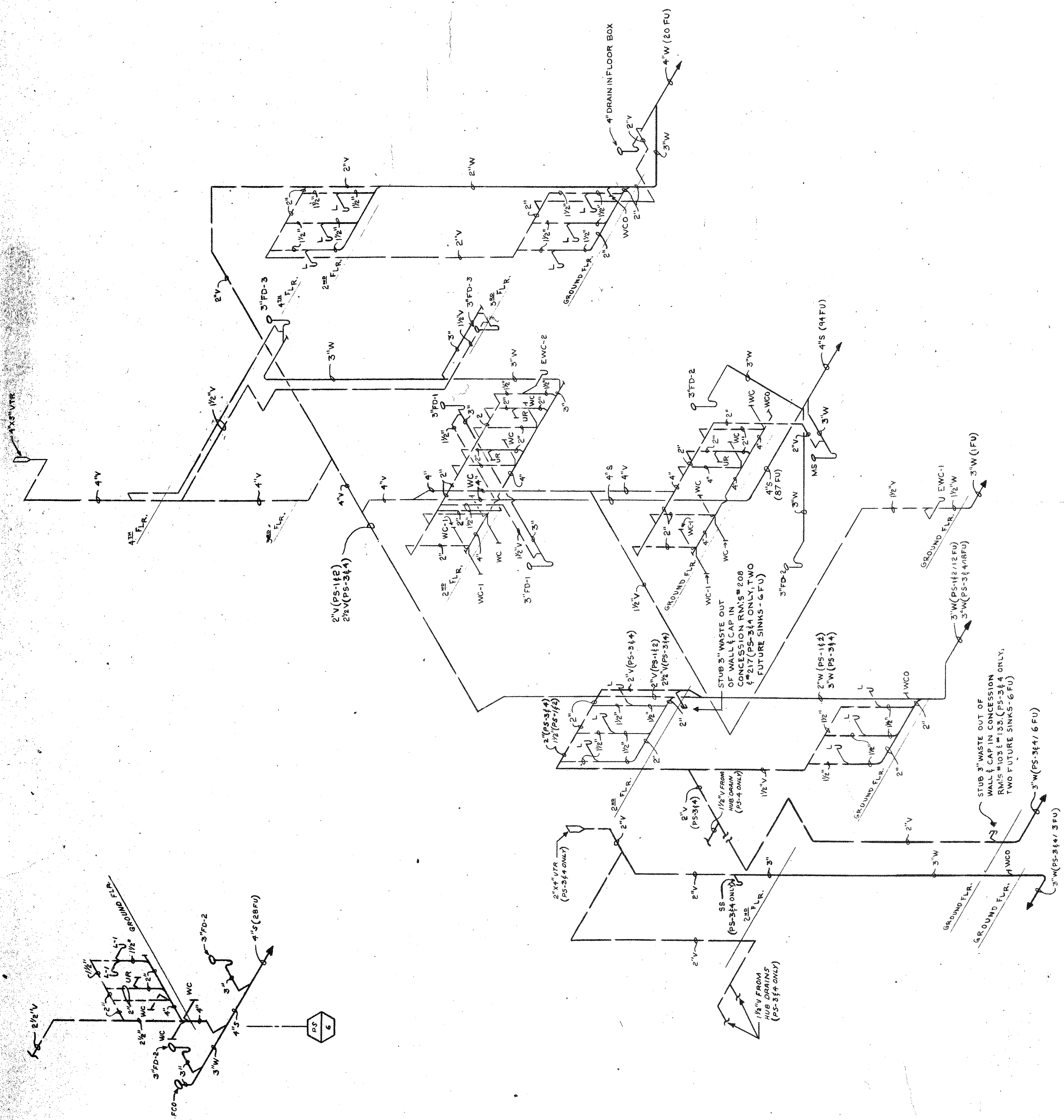
GENESIS CENTER
ADAMS, BROADWAY, AND FIFTH AVENUE
CITY OF GARY, INDIANA
RICHARD G. HATCHER,
MAYOR

Wendell Campbell Associates, Inc.
ARCHITECTS
302 E. BROADWAY
200 E. 14TH STREET EAST CHICAGO, INDIANA
WALLACE, MIGOAL & DRUCKER
CONSULTING MECHANICAL ENGINEERS
444 N. MICHIGAN AVE. CHICAGO, ILL. 60610



DATE	01-08-80
APPROVED	L.G.
CHECKED	L.G.
DRAWN	K.L.

CONTENTS
DIAGRAMS



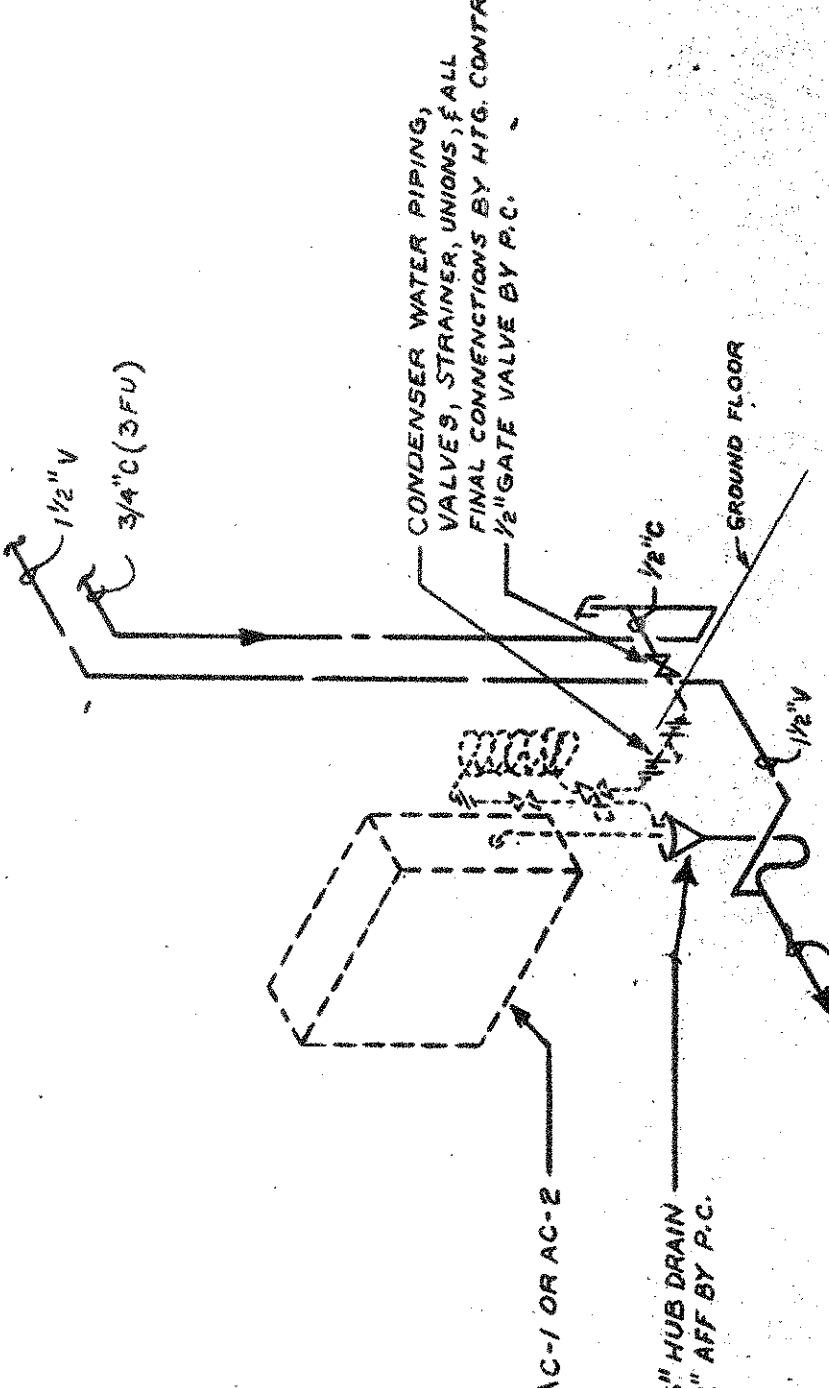
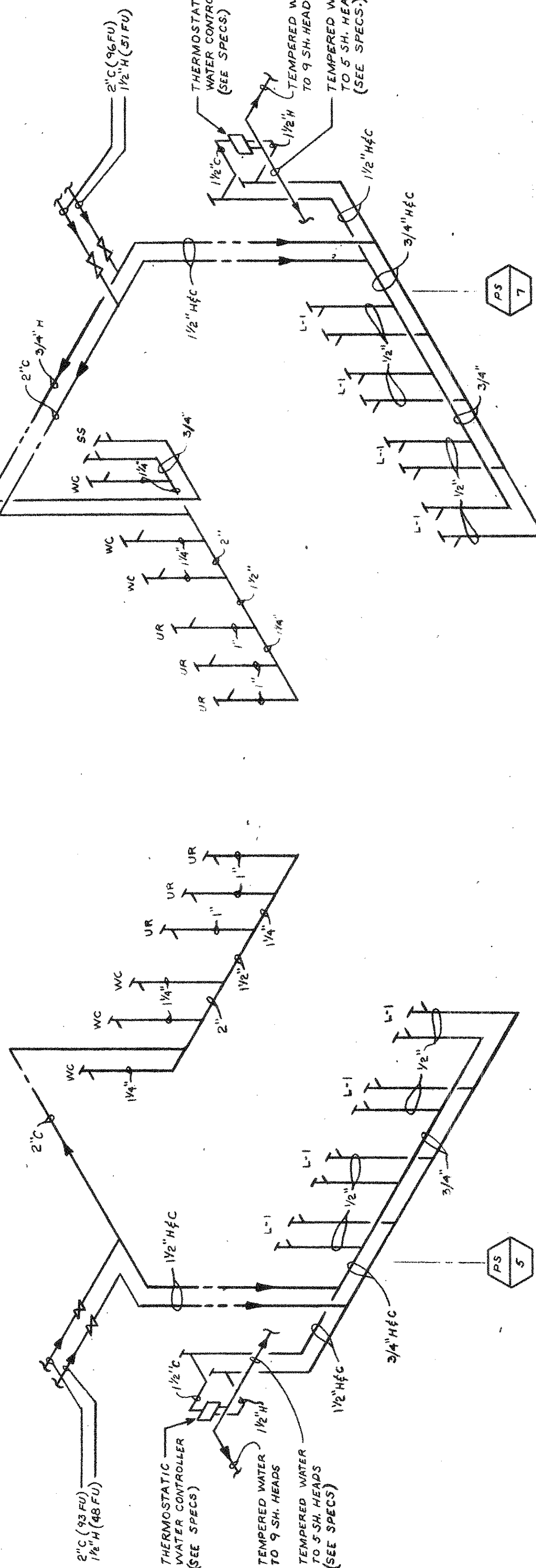
PS 1
HOT-21 FU
COLD-21 FU
TOTAL-42 FU
(SIMILAR)

PS 2
HOT-21 FU
COLD-21 FU
TOTAL-42 FU
(SIMILAR)

PS 3
HOT-36 FU
COLD-36 FU
TOTAL-72 FU
(SIMILAR WITH EXCEPTIONS AS NOTED)

PS 4
HOT-36 FU
COLD-36 FU
TOTAL-72 FU
(SIMILAR WITH EXCEPTIONS AS NOTED)

NOTE-PROVIDE 1\"/>



DOMESTIC WATER PIPING DIAGRAMS
NO SCALE

AC-1&2 PIPING DIAGRAM
NO SCALE

SANITARY PIPING DIAGRAMS
NO SCALE